

Maxair TESLA Series

Tesla series Large-diameter electromagnetic flow proportional valve



Physical properties :

Valve Type :

Double close

Fluid :

Air 、 Nitrogen 、
hydrogen 、 carbon
dioxide ect

Ambient temperature

: 5~55℃

Storage environment

: -40~70℃

Lenght :

Manifold mount:51.

74mm

Quick coupling:53.

24mm

width :

Manifold mount:16mm

Quick coupling:ø16.

6mm

Height :

Manifold mount:16mm

Quick coupling:ø16.

6mm

Weight :

70g

Trachea :

1/8NPT

Filtration :

5um

Oxygen cleaning

requirements :

standard

Maxair Tesla series is a high flow proportional valve and offer Max 240L/min flow function ,meanwhile the power consumption is less than two watts. Maxair Tesla series have other small or middle flow proportional vale that we are developing ,It will be an ideal solution that requires low hysteresis and fast response,For example , breathing machines for breathing circuit gas delivery and other medical, analytical, and pathogen detection equipment. The valve can be used for intake pressures up to 0.40MPa and has a standard control voltage range of 5V.

Feature :

- Bear Max 0.4Mpa pressure and 240L/min flow
- Support manifold mount and quick coupling
- Mount seal trachea on the panel , the trachea provides 1/8NPT interface
- The service life is more than 25 million cycles.
- Light weight (70g)
- Low power consumption(< 2W)

Electrical properties:

Power consumption :

Max 2W

Voltage :

5VDC

Electrical wiring :

standard 26#

Using material :

Main part :

C36000 Leed brass

sofa magnet material :

KM-31

Other :

C36000 Leed brass ;

S301 steel ; viton rubber

Work performance :

Internal leakage :

0.4MPa air pressure

<5mL/min

External leakage :

0.4MPa air pressure

<5mL/min

Working pressure :

Normal operation pressure

0.03~0.4MPa Proof

pressure : 1.0MPa

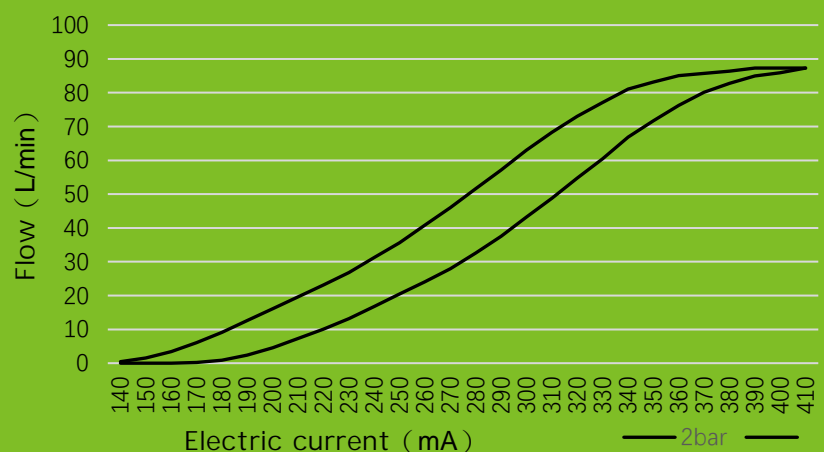
Mount hole diameter :

3.2mm

ROHS :

Pass

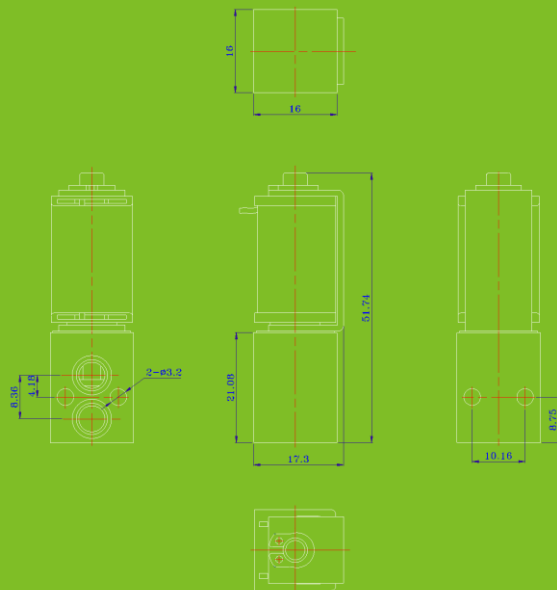
5V/11ΩProportional valve flow curve (20℃)



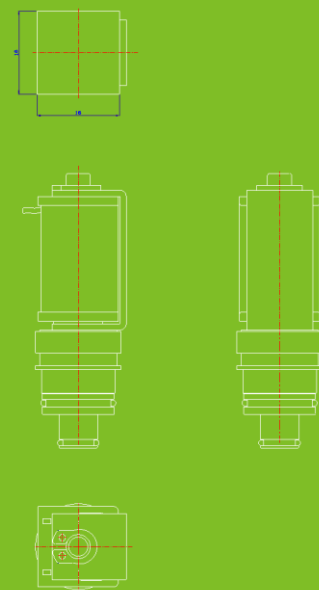
Maxair TESLA Series

Tesla series Large-diameter electromagnetic flow proportional valve

Manifold Mount



Quick Coupling



Global Sharing